

**PITKIN COUNTY COMMISSIONERS
WORK SESSION AGENDA
Plaza One Meeting Room**

TUESDAY, JANUARY 6, 2009

10:00 AM 10-10:45 10:45 – 12:15	SPECIAL MEETING - EXECUTIVE SESSION Personnel – County Manager and County Attorney Review; CRS 24-6-401 (4) (f) Personnel; C.R.S. 24-6-402 4 f Comcast cable franchise agreement; C.R.S. 24-6-402 4e Anglin litigation; C.R.S. 24-6-402 4b Negotiations with Colorado Water Conservation Board; C.R.S. 24-6-402 4b and e ADJOURN EXECUTIVE SESSION
12:15	Lunch Break
1:15	Finalize Pitkin County Comments on the Proposed White River National Forest Travel Management Plan , Rose Ann Sullivan
2:45	BREAK
3:00	<ul style="list-style-type: none"> • Memos of Interest • Future Agendas/Agenda Requests/Monthly Calendar • Board Membership Reports – RTA, NWCCOG & QQ, ACRA, CCI, RRR, RWPA, NaCo, PEIS I-70, Club 20 • BOCC Open Discussion
4:30 PM	ADJOURN

**EACH LINK ABOVE CONTAINS THE ITEMS FOR THE PACKET. A SEPARATE
PACKET WILL NOT BE POSTED ON THE WEB.**

AGENDA ITEM SUMMARY

WORK SESSION DATE: January 6, 2009

AGENDA ITEM TITLE: Finalize Pitkin County Comments on the Proposed White River National Forest Travel Management Plan

STAFF RESPONSIBLE: Rose Ann Sullivan, Barb D'Autrechy, Brian Pettet, Ellen Sassano, G.R. Fielding

ISSUE STATEMENT: Confirm Pitkin County's comments on the U.S. Forest Service's Preferred Alternative (Alternative G) for the White River National Forest Travel Management Plan.

BACKGROUND: The U.S. Forest Service has released a Supplemental Draft Environmental Impact Statement (SDEIS) on the White River National Forest's Travel Management Plan which identifies a Preferred Alternative (Alternative G) for travel management. At a December 16, 2008 Work Session, the Board provided direction on a number of Travel Management Plan issues identified by staff and took public comment. Staff has prepared final Pitkin County comments on the SDEIS and the Proposed Alternative based upon that discussion. **Final comments must be submitted to the U.S. Forest Service today, January 6, 2009.**

LINK TO STRATEGIC PLAN: Regional Activism on Environmental Issues: Pitkin County has committed to playing an active role in efforts to move governmental entities toward progressive environmental policies, as well as demanding compliance and enforcement of existing regulations designed to protect environmental quality. Participation in review of the White River National Forest Travel Management Plan is identified as an Action Item under the 2008-2009 Strategic Plan.

KEY DISCUSSION ITEMS: Verify that the attached set of comments accurately reflects Pitkin County's position on the SDEIS for the Travel Management Plan and the Preferred Alternative.

BUDGETARY IMPACT: None with respect to provision of comments.

RECOMMENDED BOCC ACTION: Authorize the Chairman's signature on the attached document.

ATTACHMENTS: Pitkin County comments on the SDEIS for the Travel Management Plan and the Preferred Alternative.

[FOR BOCC LETTERHEAD]

January 6, 2009

BY EMAIL – wrtmp@contentanalysisgroup.com

WRNF Travel Management Plan and SEIS
c/o BW-CAG
172 E 500 S
Bountiful, Utah 84010

Re: Pitkin County Comments on the Supplemental Draft Environmental Impact Statement and Proposed Alternative (Alternative G) for the White River National Forest Travel Management Plan

Dear Sir or Madam:

Pitkin County provides the following comments on the Supplemental Draft Environmental Impact Statement (“SDEIS”) and Proposed Alternative (Alternative G) for the White River National Forest Travel Management Plan (the “Travel Management Plan”):

Summer Travel:

1. FS Road 3-532.1 and Part of FS Road 538.1 (Upper Fryingpan): These roads are now shown as being converted from all uses to open only to motorized vehicles < 50” in width.

These roads have traditionally been graded by Pitkin County and cleared each spring with a bulldozer by the Bureau of Reclamation in order to provide access to the transmountain diversion structures. Thus, we request that the U.S. Forest Service (“USFS”) clarify future County obligations with respect to these roads.

2. The Crystal Valley Trail System: In Pitkin County’s 2006 comments on the Draft Environmental Impact Statement for the Travel Management Plan we noted several trails in the existing conditions report that were within a proposed alignment for the Carbondale to Crested Butte Trail (the “CB-CD Trail”) - specifically, FS Trails 3-1954W.1, 3-1966W.1 (not designated as part of the CB-CD Trail, but could complement the CB-CD Trail), 3-1966W.2, 3-1966W.3, and 3-310W.1F). We recommended that all of the aforementioned alignments remain open to all non-motorized recreational uses. Further, we recommended that any sections currently designated as a “way”, be designated as a “trail.” Our previous comments also noted the surveys recorded in the Official Records of Pitkin County on 9/17/1885, at Plat Book 1, Page 18, and on 11/9/1888, at Plat Book 1, Page 27 showing a County wagon road that predated the creation of the White River National Forest (“WRNF”).

The USFS provided only a rote response to Pitkin County’s comments related to the CB-CD Trail:

An Environmental Analysis for the Crystal River Trail must be conducted and implemented to analyze a reasonable range of alternatives (solutions) that address the purpose and need, key issues and is responsive to the needs of the community prior to

allowing use for a proposed trail in this river corridor. This travel management planning process considers if this railroad/trail prism could be incorporated into the system in the future and is not the final decision for this trail proposal.

This response, coupled with the USFS's current Preferred Alternative, fails to acknowledge the County's strong desire to ensure that USFS management of these trails retains the flexibility to allow continued exploration of alignments and potential tributary trails within this corridor. We believe that Pitkin County's rights under Revised Statute 2477 (R.S. 2477) conflict with the USFS proposal to ignore the continued existence of this path. It is not clear that the National Environmental Protection Act would apply to it. Further, as some sections of the Crystal Rail Road grade have continued to experience low impact uses, the County objects to the elimination of these "ways," and strongly opposes the rehabilitation of any of these existing routes. We therefore request that you incorporate Pitkin County's prior comments on the existing trails in the proposed CB-CD Trail alignment in your final Travel Management Plan.

Winter Travel:

1. Richmond Ridge: Pitkin County fully appreciates how long, difficult and contentious the Richmond Ridge winter access issue has been, and continues to be for the USFS. While the ultimate resolution of the access issue may not satisfy all stakeholders – clearly it is time to make a decision in connection with adoption of the Travel Management Plan and to devote WRNF resources to other issues.

A. Additional Public Access (Modification of the Aspen Skiing Company Powder Tours Special Use Permit): Pitkin County feels very strongly that *there should be no increase in recreational use of the Richmond Ridge area beyond recent levels*. The County is cognizant of the concerns of private property owners in the area and believes that the trespass issues on private land and County roads should not be allowed to continue. We are also mindful of the fact that the noise from snowmobiles (as opposed to snow cats) is an issue for some property owners.

Recognizing that: (i) County roads passing through the Richmond Ridge area are already open to the public for snowmobile use, (ii) these County roads already provide good backcountry access, and (iii) Aspen Skiing Company has obtained a Special Use Permit to operate its Powder Tours in the Richmond Ridge area, we support the following resolution of the Richmond Ridge access issue on WRNF lands:

i. Adopt Alternative G, which reflects current USFS policy and closes all WRNF land in the Richmond Ridge area to snowmobile use (thereby limiting snowmobiles to County roads passing through the area) and includes an open motorized area to the west of Richmond Ridge Rd., just past Barnard Hut.

ii. During the time period leading up to adoption of the Travel Management Plan, initiate and engage in an active discussion with the Aspen Skiing Company and members of the interested public (including representatives from Powder to the People) to assess the possibility of amending the Aspen Skiing Company special use authorization to permit general public access *solely* to the snow cat route for McFarlanes Gulch established by Powder Tours.

a. As the holder of a Special Use Permit, we recognize that Aspen Skiing Company must comply with certain terms and conditions governing its commercial operations on WRNF land and that it may have legitimate business reasons for objecting to modifications to its special use authorization. However, we feel that there is a need to retain the public access to the McFarlane's Gulch section of Richmond Ridge which has been utilized under a "gentlemen's agreement" with Aspen Skiing Company. Thus, we believe it is worthwhile for the USFS to continue to engage in this discussion for a *limited period of additional time*.

b. Pitkin County also recommends that any amendment to the Aspen Skiing Company special use authorization that would allow general public access to the McFarlane's Gulch area be formally implemented on a trial basis (the time period to be determined by the USFS and Aspen Skiing Company). It is important to the County that access is restricted to this single route. If there are continuing problems with unauthorized snowmobile use on WRNF lands and/or trespass on private lands associated with general public access, then we would advocate revocation of any amendment to the special use authorization at the conclusion of the trial period. Similarly, if illegal parking on County roads escalates as a result of a change in the special use authorization, we would advocate revocation of the amendment at the conclusion of the trial period.

iii. Actively enforce limitations on over-the-snow vehicular use of WRNF land in the Richmond Hill area by USFS snowmobile patrols.

iv. Continue to work with Pitkin County staff to improve the signage in the Richmond Hill area.

B. Overnight Parking at the Top of the Gondola: The USFS has stated that it would like to see overnight parking at the top of the gondola on Aspen Skiing Company property discontinued. Pitkin County recommends that this parking be retained at the present time. Illegal parking in the County right-of-way on Little Annie, Midnight Mine and Express Creek Roads will be exacerbated if overnight parking of snowmobiles is prohibited at the "marina". Indeed the County would like to investigate opportunities for USFS assistance with enforcement of parking restrictions on County roads in these areas.

Fuel being carried up on the gondola by members of the public is clearly a safety/security issue. However, we have been informed by the Aspen Skiing Company that its staff would not allow someone to board the gondola if they observed them carrying fuel. We have also been told by the Aspen Skiing Company that they are unaware of any fuel spills at the "marina." Certainly it would be expected that reporting (as necessary) and site remediation would be handled by the responsible party pursuant to state and federal law if a fuel spill occurred – the same as anywhere else on the mountain. If overnight parking continues, it may be appropriate to create a fuel containment area for the "marina".

2. Kobey Park:

A. Woody Creek Road Through Lenado: The County and the USFS are in accord with respect to the continued use of Kobey Park for snowmobiles. However, we are concerned about the current access point.

Woody Creek Road through Lenado to the USFS bridge is experiencing significantly more truck and trailer combination traffic than in years past. Several area residents have expressed concern about the safety of such a high level of recreational vehicle use on this narrow road during the winter months. The County has no plans to improve the road. Thus, we believe that the USFS needs to take a hard look at this situation. Have other access points (including Hannon Creek access) been fully-considered as an alternative?

B. County In-Holding: Pitkin County, through its Open Space and Trails program, currently owns mining claims comprising a 65-acre in-holding in the Kobey Park area. The County is also under contract to obtain an additional 300+ acres in mining claims in the same vicinity. The Winter Management Plan for Alternative G has much of these County lands bordering or entirely within its “Open Motorized Access” zones. The Pitkin County Code prohibits motorized uses on its Open Space and Trails properties. Such inconsistencies in management of public lands in the backcountry would obviously create confusion among users and would be difficult to enforce.

Adjusting the boundaries for the proposed winter travel areas so that the County-owned in-holdings are removed from proximity to the “Open Motorized Areas” and located within either the “Restricted – Motorized Routes Only” or Motorized Prohibited Areas” would resolve this problem. The specific locations of these in-holdings lend themselves to making such adjustments, as they are located in areas adjacent to either specified travel routes for Alternative G, or in areas that see little, if any, winter travel. The map included as Attachment 1 depicts how the boundary for “Restricted – Motorized Routes Only” areas could be shifted to the west to alleviate this conflict. We request the USFS to make this boundary adjustment.

3. Sellars Park: Pitkin County, through its Open Space and Trails program, owns land within the WRNF in the Sellars Park area. This County-owned 160-acre parcel is bordered by State Wildlife lands to the north, with WRNF at the rest of its boundaries. The Winter Travel Management Map for Alternative G designates the WRNF land to the west and south as “Open Motorized Areas”, and to the east as “Restricted – Motorized Routes Only”, with an identified “Motorized Route” on the USFS’s Fryingpan Road up to the County property.

Conflicts in management presented by Alternative G, as proposed, could be easily rectified by adjusting the boundary for these travel areas so that the County property lies entirely within the “Restricted – Motorized Routes Only” area. The map included as Attachment 2 depicts how the boundary for “Restricted – Motorized Routes Only” areas could be shifted to the west to alleviate this conflict. We request the USFS to make this boundary adjustment.

4. Motorized Trails in Proximity to Waterways: Alternative G results in 11 additional miles of motorized trails in close proximity (300’) to stream channels in the Roaring Fork Watershed, as well as an additional 55 stream crossings. A portion of these new motorized trails (FS Trails 1-534W.2M (Triangle Peak Trail), 1-2189.1 (Sloane Cut-Off), 1-1933.1 (Red Canyon) and 3-2186.2 (small section of the Arbaney-Kittle Trail, on top))

fall within Pitkin County – where “bandit” trails and a portion of a currently-recognized bicycle trail are being authorized for motorcycle use.

Pitkin County recognizes that one of the goals of the previously-adopted WRNF Land and Resource Management Plan (the “Forest Management Plan”) is to provide a wide range of motorized, mechanized, and non-motorized recreation opportunities and difficulty levels spread across the WRNF, and that the Travel Management Plan must be consistent with the Forest Management Plan. This directive has, apparently, played a large part in the decision to bring FS Trails 1-534W.2M, 1-2189.1 and 1-1933.1 into the WRNF system and to authorize these “bandit” trails for motorcycle use, together with FS Trail 3-2186.2.¹

Motorized trails in proximity to streams create a greater risk to water quality and may degrade wetlands and riparian areas, particularly where trails cannot be properly maintained (due to budget constraints, or otherwise). The USFS’s response to prior comments submitted on the proposed changes to these routes which note the need for seasonal wildlife closures (*see, e.g.*, comments previously submitted by Wilderness Workshop) also concern us.

Pitkin County does not support legitimizing the 3 “bandit” routes for motorcycles, or opening the upper portion of FS Trail 3-2186.2 to motorcycle usage. If the 3 “bandit” routes are included in the WRNF trail system, they should only be made available to hikers and equestrians, when and if wildlife demands allow (with suitable barriers in place to prohibit unauthorized vehicular use). As the USFS has recognized in the SDEIS:

National Forest System Lands are finite. While it is the agency’s goal to provide for public use, *the agency also has a responsibility to manage the land resources*. Given the limitations, it is not likely that each forest can be expected to meet all current and future demand for activities that are allowed in the National Forests. SDEIS at p. 79 (emphasis added).

In this instance the USFS should elect to manage the land for its resource values, as opposed to using it to meet some self-imposed quota system for recreational experiences on the WRNF.

Pitkin County would also like to bring the following general comments to the attention of the USFS as it prepares its final Travel Management Plan:

1. Seasonal Trail Closures: We understand that the USFS is still debating whether or not to include periodic closures of routes in the final Travel Management Plan. Pitkin County supports the use of seasonal trail closures (*e.g.*, closing the Government Trail to horses during the summer, but allowing horses during hunting season) and their incorporation in the Travel Management Plan.

2. Opening Certain Pitkin County Roads to Non-Highway Legal (Unlicensed) Vehicle Use: The USFS has indicated that it desires to:

¹ In response to an objection by Wilderness Workshop to the proposed use of Red Canyon Trail (FS Trail 1-1933.1), the USFS stated that “[t]his area is one of few spots on the district that could allow motorized singletrack trails.”

work with the various state, county and local agencies to determine where non-highway vehicles may be legally used on routes under the control of those entities. Decisions in the final travel management plan will reflect the legality and practicality of non-highway motor vehicles to access areas of the forest. The practicality analysis will include factors such as the availability of adequate trailhead parking, need, and whether other legal options exist. SDEIS at pg. 16.

Pitkin County continues to support cooperative planning where County roads provide access to WRNF land. The County recognizes that illegal unlicensed vehicular traffic is already occurring on some County roads as people travel to and from recreational opportunities on the WRNF.

The USFS has had a number of discussions with County staff about this issue and has requested that the County declare the following roads open to unlicensed vehicle use:

- a. Richmond Ridge Rd.;
- b. Little Annie Rd. (starting above the subdivision);
- c. Midnight Mine Rd.;
- d. Pearl Pass Rd.;
- e. Express Creek Rd.;
- f. Hagerman Pass Rd.;
- g. Hunter Valley Rds (during hunting season); and
- h. Possibly, Lincoln Creek Rd.

Pitkin County believes that it is appropriate to consider these roads for legal use by unlicensed vehicles. There may be additional roads that should be added to this list.

Authorization of motorized mix use requires that both safety and road engineering considerations be analyzed in detail. County staff will present a final list of County roads proposed to be opened to unlicensed vehicle use for review by the Pitkin County Board of County Commissioners in the next few weeks. We will keep WRNF staff apprised of this work and the meeting schedule.

3. Parking Areas: While the creation of new parking areas is not within the scope of the USFS's travel management planning process, Pitkin County would like to stress the continuing need for more parking generally at nodes with County roads. Furthermore, we suggest that it would be appropriate for the USFS to modify its process in the future to *require* that the identification of suitable parking areas (including realistic sources of financing for their creation) be part of the travel management planning process. The current process does not offer solutions to existing problems and may in fact create new unmet demands for parking. A more holistic planning process is needed.

4. Consistency in Regulations: Pitkin County includes not only portions of the WRNF, but a considerable amount of land managed by the Bureau of Land Management ("BLM"). Recently the BLM made changes in its trails signage program that aligned it more closely with that of the USFS. We compliment the agency for this effort. To the extent possible, we encourage the USFS and the BLM to continue to look for ways to make the agencies' respective rules and regulations consistent and compatible – for the public benefit.

Please address any questions concerning these comments to:

Rose Ann Sullivan
Environmental Resources Manager
Pitkin County Environmental Health & Natural Resources Department
0405 Castle Creek Rd., Suite 10
Aspen, CO 81611
roseann.sullivan@co.pitkin.co.us
Phone: 970-920-5073
Fax: 970-920-5077

Sincerely,

PITKIN COUNTY BOARD OF COUNTY COMMISSIONERS

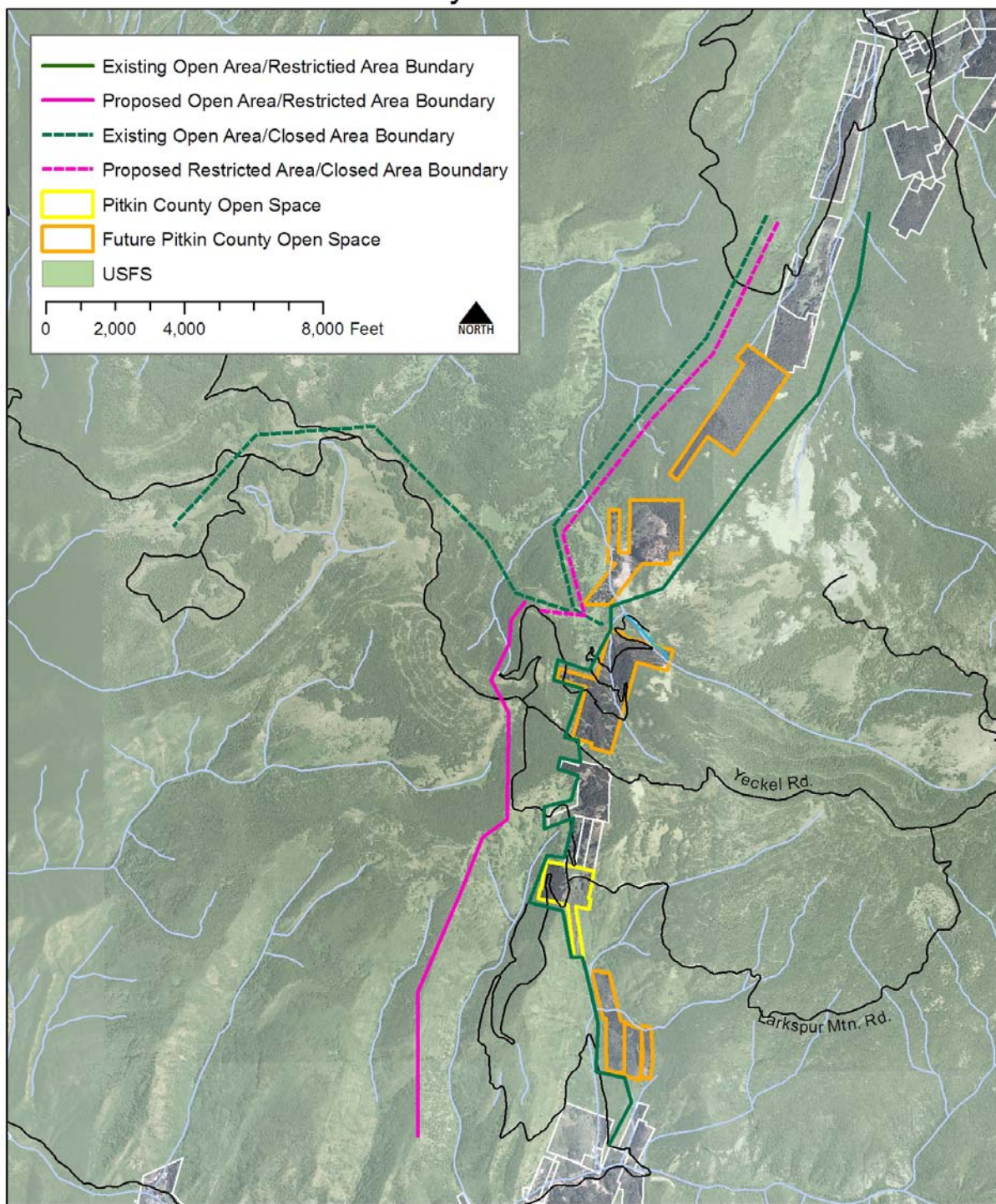
By: _____
Jack Hatfield
Chairman

Attachments

Ccs: Irene Davidson, WRNF
Tim Lamb, WRNF
Rose Ann Sullivan
Barb D'Autrechy
Brian Pettet
G.R. Fielding
Ellen Sassano

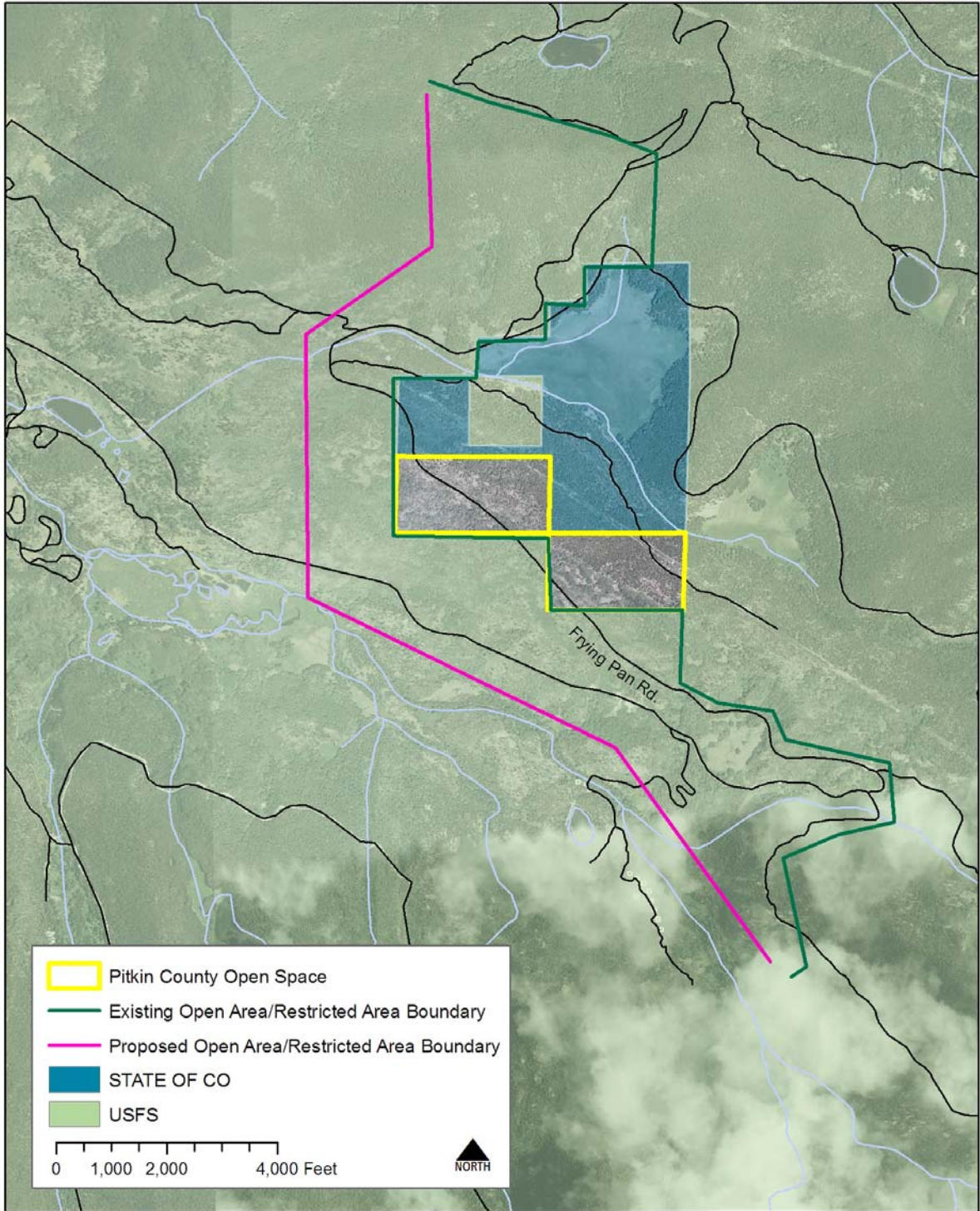
ATTACHMENT 1

Kobey Park Area



ATTACHMENT 2

Sellars Park Area



Memos of Interest

November 18, 2008

Cindy Houben
Community Development Director
Pitkin County Community Development Department
130 Galen Street
Aspen, CO 81611

Dear Cindy,

On behalf of the Mattaway family, I cannot thank you and the whole Community Development Department staff enough for the extra effort that was afforded on our behalf in processing our building permit application. I especially want to thank Lance Clarke, Susan Pearson, Joanna Schaffner, Tony Fusaro, Brian Pawl, Vicki Monge and Suzanne Wolff who each did whatever they could, and went the extra mile, to help us, in cooperation with Glenn Horn and Jim Iglehart, to get successfully through the process. We are extremely grateful.

Sincerely,


L. Richard Mattaway

MEMO OF INTEREST

WORK SESSION DATE: 1/6/2009

TOPIC: Mountain Valley Slurry Seal

STAFF RESPONSIBLE: G.R. Fielding, Pitkin County Engineer

ISSUE STATEMENT:

The Mountain Valley Home Owners Association has complained about the chip seal application to the roads in their subdivision. This complaint was accompanied by a request for a further improvement to a smoother application. Staff had recommended slurry seal application and brought the request to the Board. The Board directed Staff to bring this item back once a budget for 2009 was set in order to determine whether such an application is prudent given the current budget.

BACKGROUND:

The budget for the 2009 year is to be \$400,000, down from the approximately \$1,900,000 budgeted in 2008. It was estimated that a slurry seal would cost approximately \$100,000 for about 1.5 miles of roads within the Mountain Valley Sub-division. Upon recent inspection, the roads of Mountain Valley were found to be consistent with those at this point after a chip seal application. Chips have been shaved down by the snow plows during the first few storms and most loose chips have been removed from the roadway.

LINK TO STRATEGIC PLAN:

Regional Transportation – Holding to a financially prudent asphalt maintenance schedule is essential in providing safe, efficient, and high-quality County Roads.

KEY DISCUSSION ITEMS:

Is it appropriate to schedule projects to approve amenities when, with current funding, the County will not keep up with routine asphalt maintenance?

BUDGETARY IMPACT:

Staff is currently planning on minimal asphalt maintenance for the near future. Standard maintenance accounts for approximately \$250,000 of the budgeted \$400,000. Standard maintenance includes items such as patching for asphalt failures and striping. Staff is anticipating approximately \$1,000,000 in carry over, however; this will be planned for several small maintenance projects, maintenance contingency and engineering for projects in anticipation of funding.

STAFF ACTION:

Staff will not include a slurry seal application in the 2009 project list unless otherwise directed.

MEMO

WORK SESSION DATE: January 7, 2009

TOPIC: Request for contribution to purchase carbon monoxide detectors

FROM: Tony Fusaro, Chief Building Official

This is a request for \$2000 in discretionary funds to assist in the purchase of carbon monoxide detectors at bulk rate. These detectors will be distributed to those who would be challenged to pay for them on their own. Fire Marshal Ed Van Walraven has negotiated with manufacturers First Alert and Kidde to get a special rate. These rates will be between \$21 and \$30 depending on the detector (battery operated or plug in with battery back up) and on the quantity ordered. Fire Marshal Van Walraven is also working with Alpine Ace Hardware in Aspen to procure more detectors at an advantageous rate.

The Aspen Volunteer Fire Protection District, the City of Aspen and the Basalt and Rural Fire Protection District are also funding \$2000 each for this purpose. This is a work in progress and is still evolving. A meeting of representatives of these organizations has been scheduled for January 8, 2009 to lay the ground rules for distribution of the detectors and to discuss other possible steps. I believe this program will be responsibly run and would be a great benefit to our citizens.

Future Agendas

**PITKIN COUNTY COMMISSIONERS
WORK SESSION AGENDA
Plaza One Meeting Room**

TUESDAY, JANUARY 13, 2009

Noon	Oath of Office Ceremony on the Courthouse Steps Reception following in the Courthouse Lobby	
1:00	Commissioner Appointments to Boards and Committees	Susan Murphy
1:45	Landfill Tipping Fees	Chris Hoofnagle
2:15	Prep for Meeting with BLM	
2:45		
3:15	BREAK	
3:30	<ul style="list-style-type: none"> • Memos of Interest • Future Agendas/Agenda Requests/Monthly Calendar • BOCC Open Discussion 	
5:00 PM	ADJOURN	

**PITKIN COUNTY COMMISSIONERS
REGULAR MEETING AGENDA
Plaza One Meeting Room**

WEDNESDAY, JANUARY 14, 2009

12:00 NOON ADDITIONS/DELETIONS TO AGENDA
PUBLIC COMMENT, COMMISSIONER COMMENTS

CONSENT ACTIONS

1. Resolution Appointing the Chair and Vice-Chair of the Board
2. Community Services Block Grant, Mitzi Ledingham
3. Ambulance License, Rich Walker

CONSENT ACTIONS- 1st Readings, Set for Public Hearing on

4.

CONSENT PUBLIC HEARING

1. Special Event Liquor License for Roaring Fork Outdoor Volunteers, Jeanette Jones
2. Confirmatory Reading, Emergency Ordinance Amending the Pitkin County Code to Clarify and Expand Upon a Requirement Relating to Carbon Monoxide Detectors, Tony Fusaro
3. Confirmatory Reading, Emergency Ordinance Prohibiting the Consumption of Alcohol on Unlicensed Public Premises for the Duration of the 2009 Winter X-Games, John Ely
4. Confirmatory Reading, Emergency Ordinance Authorization of Trail License Agreement with Meadowood Metropolitan District, Dale Will
5. 2nd Reading, Resolution Authorizing Supplemental Appropriations to the 2008 Budget, Susan Atwood
6. 2nd Reading, Resolution Authorizing Expenditures of Funds Generated through the Renewable Energy Mitigation Program, Tony Fusaro

LAND USE CONSENT PUBLIC HEARINGS

1. Shanahan Subdivision Exemption for Open Space Parcel, PH(PN 12/07/08), S. Wolff
- 2.

LAND USE CONSENT ACTIONS

3.

LAND USE PUBLIC HEARINGS

4.

LAND USE ACTIONS

5.

BOCC OPEN DISCUSSION

ADJOURN

FRIDAY, JANUARY 16, 2009 – CCI Steering Committee

Tourism, Resorts & Economic Development

General Government

Taxation & Finance

Transportation & Telecommunications

**PITKIN COUNTY COMMISSIONERS
WORK SESSION AGENDA
Plaza One Meeting Room**

TUESDAY, JANUARY 20, 2009

10:00 AM	SPECIAL MEETING – EXECUTIVE SESSION ADJOURN SPECIAL MEETING	
12 NOON	LUNCH BREAK	
1:00 PM	Annual Meeting with BLM, Steve Bennett BLM Acting Field Manager	
1:45	Conceptual MRF Designs	Chris Hoofnagle
2:45		
3:15	BREAK	
3:30	<ul style="list-style-type: none"> • Memos of Interest • Future Agendas/Agenda Requests/Monthly Calendar • BOCC Open Discussion 	
5:00 PM	ADJOURN	

FRIDAY, JANUARY 23, 2009 – CCI Steering Committee

Public Lands
Agriculture, Wildlife & Rural Affairs
Land Use & Natural Resources
Health & Human Services

**PITKIN COUNTY COMMISSIONERS
WORK SESSION AGENDA
Plaza One Meeting Room**

TUESDAY, JANUARY 27, 2009

1:00	Airport Update	Jim Elwood
2:30	Prep for Joint City Council Meeting on February 3, 2009	
3:00	BREAK	
3:15	<ul style="list-style-type: none">• Memos of Interest• Future Agendas/Agenda Requests/Monthly Calendar• BOCC Open Discussion	
4:45 PM	ADJOURN	

**PITKIN COUNTY COMMISSIONERS
REGULAR MEETING AGENDA
Plaza One Meeting Room**

WEDNESDAY, JANUARY 28, 2009

12:00 NOON ADDITIONS/DELETIONS TO AGENDA

PUBLIC COMMENT, COMMISSIONER COMMENTS

CONSENT ACTIONS

1. Resolution Appointing Commissioner Representatives Board and Commissions and Designating the Official Agenda Posting Place

2.

CONSENT ACTIONS- 1st Readings, Set for Public Hearing on

3.

CONSENT PUBLIC HEARING

4.

LAND USE CONSENT PUBLIC HEARINGS

1. PT Ranch House LLC/PT Barn House LLC Extension of Vested Rights, S. Wolff
2. Oppenheim Expansion of Non-Conforming Structure, (Continued from 12/17/08 at the request of the Applicant), PH (PN 11/16/08), M. Kraemer

3.

LAND USE CONSENT ACTIONS

4.

LAND USE PUBLIC HEARINGS

5.

LAND USE ACTIONS

6.

BOCC OPEN DISCUSSION

ADJOURN

**PITKIN COUNTY COMMISSIONERS
WORK SESSION AGENDA
Plaza One Meeting Room**

TUESDAY, February 3, 2009

1:00		
3:00	<ul style="list-style-type: none"> • Memos of Interest • Future Agendas/Agenda Requests/Monthly Calendar • Board Membership Reports – RTA, NWCCOG & QQ, ACRA, CCI, RRR, RWPA, NaCo, PEIS I-70, Club 20 • BOCC Open Discussion 	
3:45	BREAK	
4:00 – 6:00 PM	Joint Meeting with Aspen City Council at City Hall AACP	

**PITKIN COUNTY COMMISSIONERS
REGULAR MEETING AGENDA
Plaza One Meeting Room**

WEDNESDAY, FEBRUARY 11, 2009

12:00 NOON ADDITIONS/DELETIONS TO AGENDA
PUBLIC COMMENT, COMMISSIONER COMMENTS

CONSENT ACTIONS

1.

CONSENT ACTIONS- 1st Readings, Set for Public Hearing on

2.

CONSENT PUBLIC HEARING

3.

LAND USE CONSENT PUBLIC HEARINGS

1. Middle Ranch LLC Designation to Historic Register with Extended Vested Rights, PH (PN 1/11/09),
S. Wolff

LAND USE CONSENT ACTIONS

2.

LAND USE PUBLIC HEARINGS

3.

LAND USE ACTIONS

4.

BOCC OPEN DISCUSSION

ADJOURN

FEBRUARY 12 AND 13, 2009

BOCC Retreat at the Redstone Inn

FRIDAY, FEBRUARY 13, 2009 – CCI Steering Committee

Tourism, Resorts & Economic Development

General Government

Taxation & Finance

Transportation & Telecommunications