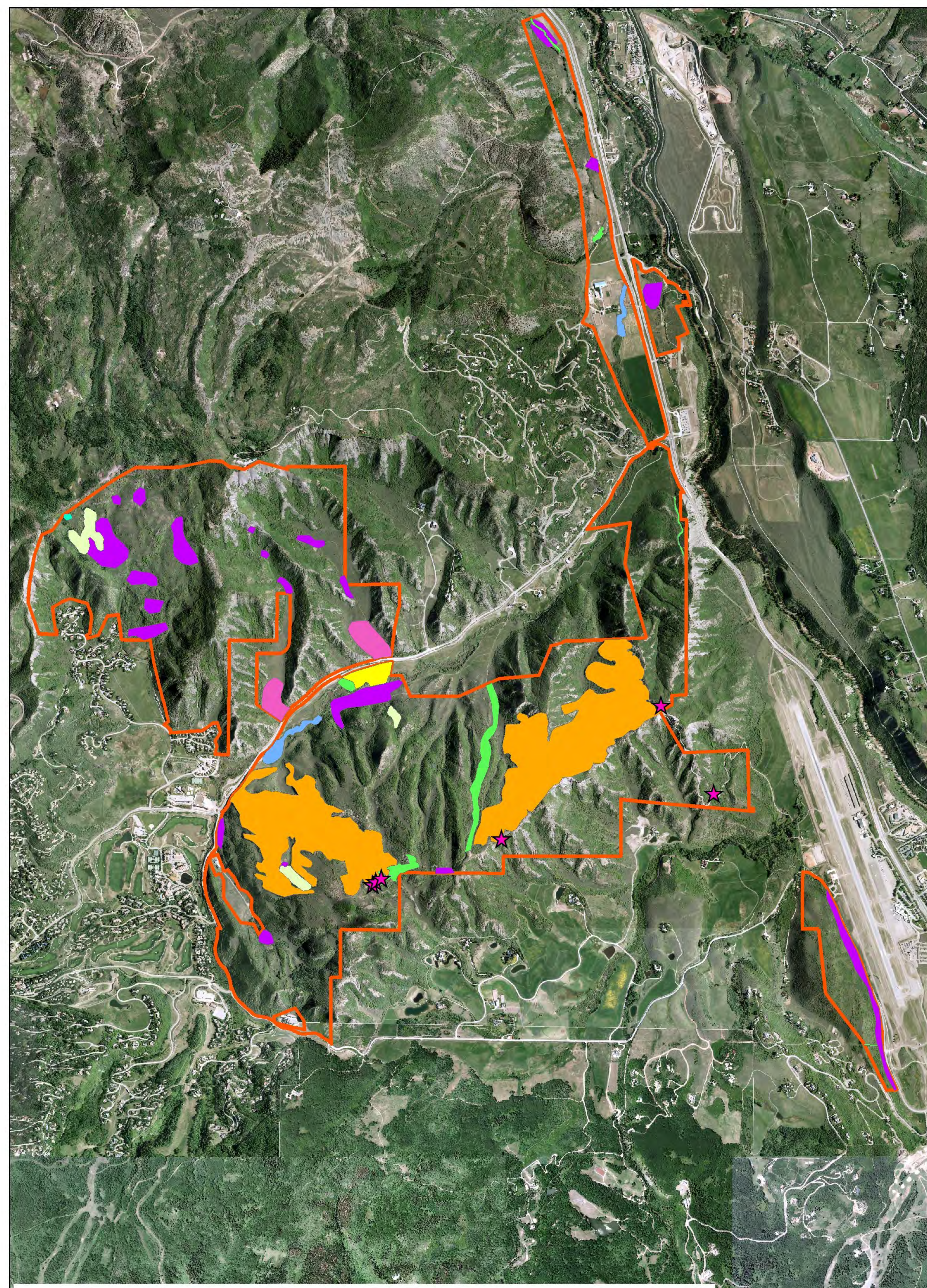


ECOLOGICAL RESTORATION

- ⇒ 292 Acres Mountain Shrubland Disturbance Regime Treatments
- ⇒ 93 Acres Noxious Weed Restoration Areas
- ⇒ 26 Acres Disturbed Areas to Restore
- ⇒ 21 Acres Sagebrush Species Diversity Restoration
- ⇒ 16 Acres Aspen Regeneration Zones
- ⇒ 14 acres Riparian Corridor Restoration Zones
- ⇒ 9 Acres Native Meadow Restoration
- ⇒ 1 Acre Fen Restoration



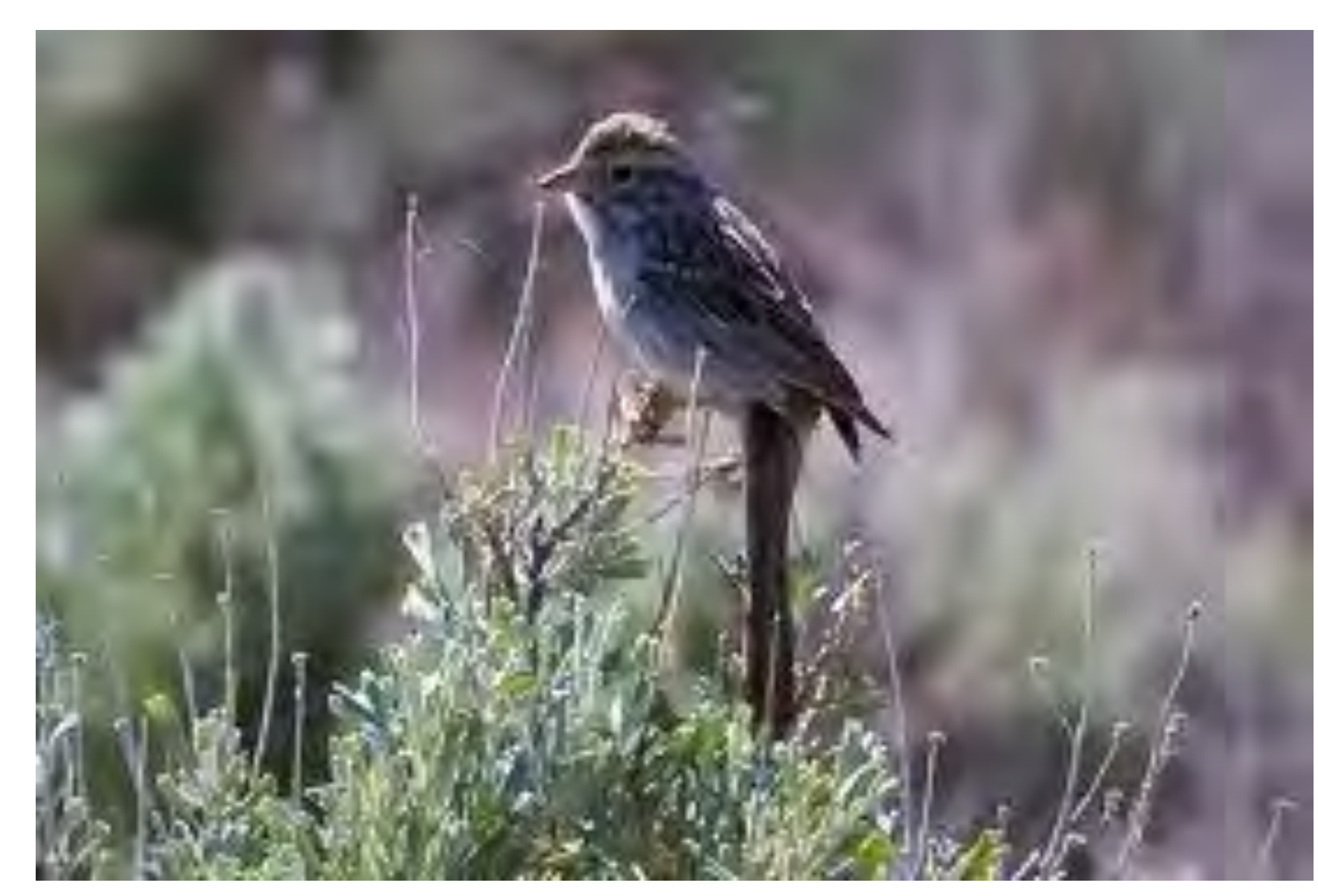
ECOLOGICAL RESTORATION ACTIVITIES

Type	Native Meadow Restoration
Aspen Regeneration Zones	Noxious Weeds Restoration Areas
Disturbed Area Restoration	Riparian Corridor Restoration Zones
Fen Restoration	Sagebrush Species Diversity Restoration
Mountain Shrubland Disturbance Regime Treatments	Silverleaf Milkvetch Habitat Monitoring Zones
	Sky Mountain Park

1 in = 2,000 feet



Silverleaf Milkvetch



Brewer's Sparrow



Virginia's Warbler