

# Wilton Jaffee Sr. Park Management Plan



June 2003

Pitkin County Open Space and Trails

# TABLE OF CONTENTS

|                                       |       |
|---------------------------------------|-------|
| 1.0 INTRODUCTION                      | 1     |
| 2.0 RESOURCE MANAGEMENT GOALS         | 1     |
| 2.1 Goals                             | 1     |
| 3.0 GENERAL DESCRIPTION OF PROPERTIES | 2     |
| 3.1 Acquisition(s) and Status         | 2     |
| 3.2 Physical Characteristics          | 3     |
| 3.2.1 Location                        | 3     |
| 3.2.2 Topography                      | 3     |
| 3.2.3 Geology                         | 3     |
| 3.2.4 Soils                           | 3     |
| 3.3 Land Use Considerations           | 3     |
| 3.3.1 Property Perspective            | 3     |
| 3.3.2 Adjacent Land Use               | 3     |
| 3.3.3 Twentieth Century Land Use      | 4     |
| 4.0 ECOLOGICAL RESOURCES              | 4     |
| 4.1 Vegetation                        | 4     |
| 4.1.1 Upland Vegetation               | 4     |
| 4.1.2 Riparian Vegetation             | 5     |
| 4.1.3 Noxious Weeds                   | 5     |
| 4.2 Wildlife                          | 6     |
| 5.0 VISITOR SERVICES                  | 7     |
| 5.1 Recreation Potential              | 7     |
| 5.1.1 Significant Resources           | 7     |
| 5.1.2 Trail System Considerations     | 8     |
| 5.1.3 Other Recreation Resources      | 8     |
| 5.2 Education Potential               | 9     |
| 5.3 Dogs                              | 9     |
| 5.4 Fencing                           | 9     |
| 5.5 Visitor Amenities                 | 9     |
| 5.5.1 Memorials                       | 9     |
| 6.0 SPECIFIC MANAGEMENT ACTIONS       | 10    |
| 7.0 REGULATIONS                       | 10    |
| Appendix A                            | 11    |
| Appendix B                            | 12    |
| Appendix C                            | 13    |
| Appendix D                            | 14    |
| Appendix E                            | 15    |
| Restoration Photos                    | 16-20 |

## **1.0 INTRODUCTION**

Located adjacent the historic Smith Bridge crossing along the Roaring Fork River, Wilton Jaffee Sr. Park is a vital recreational river access point. At this location, the Roaring Fork River emerges from a scenic and roadless gorge, which is largely protected Open Space. The nearest upstream vehicular river crossing is approximately 4.5 miles upstream. Therefore, Jaffee Park is heavily used as access to fishing, rafting, kayaking, as well as to the Rio Grande and newly constructed Aspen Mass Trails. With recent improvements and parking for up to 20 vehicles Jaffee Park has become a favorite starting or stopping locale for river and trail activities along with a perfect place for a picnic.

The park was gifted to Pitkin County in two pieces, in 1982 and 1986 respectively. The donees intent to restrict the use to outdoor recreation is insured by deed restrictions. With the growing popularity of rafting, biking, and fly fishing, Jaffee Park's use has also increased since it came to Pitkin County. In 1999, Jaffee Park was formally designated as Pitkin County Open Space, thereby coming under the stewardship umbrella of the Open Space and Trails Program. Since then Open Space and Trails staff have begun to restore, landscape and maintain the park.

The Open Space and Trails Program was created by voter initiative in 1990. Open Space and Trails Board Stewardship Policy #1 calls for the adoption of a Management Plan for each property in the program, to determine "balanced stewardship" of land and water, wildlife, scenic, cultural, and recreational resources. Since 1999, the Program has adopted many such plans to guide the "preservation, use, and improvement" of Open Space lands.

In many ways, Jaffee Park is our most challenging property due to its past as a heavily impacted gravel pit, and current use as enormously popular public resource. Hence our restoration efforts must proceed side by side with heavy recreational use. All of the attendant impacts need to be monitored and managed to provide a great public park while restoring and maintaining the native flora and associated fauna. Pitkin County Open Space and Trails is writing this resource management plan to address these issues so that Jaffee Park can be nurtured and managed accordingly.

## **2.0 RESOURCE MANAGEMENT GOALS**

### **2.1 Goals**

- Provide the public with a quality recreational experience.
- Provide safe access to the river and trails.
- Balance recreational demand and trail development with restoration and protection of riparian ecological resources.
- Determine impacts from use and then continue to restore and maintain the diversity of native flora and fauna that should exist in this area.

- Continue the commercial permitting system begun in 2002.
- Locate, map, and control all noxious weeds through integrated pest management.
- Provide public education about the natural significance of Jaffee Park and adjacent Open Space.

### **3.0 GENERAL DESCRIPTION OF PROPERTIES**

#### **3.1 Acquisition(s) and Legal Status**

Wilton Jaffee Sr. donated the land for the park in two parts, one in 1982 and the other in 1986.

Type of Acquisition: Fee Simple Donation subject to deed restrictions on certain structures and uses.

Size: The northerly parcel contains 15.577 acres and the southerly parcel contains 18.063 acres. Total size of the park is 33.64 acres.

Public Record: Quit Claim Deed: Book 426 Page 277 for the northerly portion. Quit Claim Deed: Book 526 Page 299, Resolution 86-142, Book 526 Page 297 for the southerly portion.

Title Insurance: Ownership and Encumbrance Report on the southerly portion by Stewart Title indicates no encumbrances (liens). There is no Ownership and Encumbrance Report or Title Insurance for the other portion of the park.

Pre-Existing Encumbrances: utility and road easements. At the time of conveyance, the Grantor reserved waterline easement, well easements and road easement access the wells and water license. There is a lease to Rocky Mountain Gas Company for the fenced in section near the road entrance to the park for ten years from January 1, 1998.

Survey: none on file.

Water Rights: Pitkin County has been in the process of acquiring the right to use a well located in the park. This well is termed Jaffee Well No. 5. An application for the right to use this well has been submitted and if approved will be used for landscape irrigation, dust control, park and recreation uses. The maximum pumping rate is 54 gallons per minute with an annual maximum removal of 5.3 acre-feet. For irrigation in 2001 and 2002 a temporary surface diversion was taken from the Roaring Fork River and if the Well Permit Application is approved, the surface diversion will no longer be used.

#### **3.2 Physical Characteristics**

##### **3.2.1 Location**

Portions of Lots 8 and 9, Section 21, T9S, R85W. The park is located northwest of Aspen, along the east side of the Roaring Fork River, just south of the Smith Road bridge at the junction of Smith Hill Way, McLain Flats Road, and Upper River Road.

### 3.2.2 Topography

Jaffee Park is located along a deep canyon formed by the Roaring For River with a 100-300 foot gently sloping floodplain leading to the steeply sloping rocky canyon walls. In the park the canyon walls can reach slopes of over 60 percent and have a western to southwestern aspect. The elevations at Jaffee Park range from 7300 feet to 7600 feet.

### 3.2.3 Geology

Jaffee Park is located along the Roaring Fork River, which along with the receding glaciers cut a deep canyon and exposed many layers of sedimentary rock. The gravel pit operations mined the glacial deposits, alluvium and stream-laid gravel and boulders that are still plentiful in and around the park.

### 3.2.4 Soils

Torriorthents-Camborthids-Rock outcrop complex, 6-65 percent slopes.

## 3.3 Land Use Considerations

### 3.3.1 Property Perspective

Jaffee Park was gifted to Pitkin County in two parcels to serve as a public park. Conveyance of the second parcel was contingent upon the Grantor's approval of a plan for the park developed by Pitkin County. Jaffee Park was donated several years prior to the inception of the Open Space and Trails program and was managed by the general fund until its designation to the Open Space and Trails Program in 1999. Jaffee Park is across the river and just downstream from the Mills Open Space and Aspen Mass property, which are co-owned by Pitkin County and the City of Aspen. Jaffee Park is part of a large network of Open Space parcels that stretch along the Roaring Fork River from the City of Aspen to Jaffee Park. These properties include Stein Riverside Park, Stein, Red Butte Ranch, Airport Ranch, and Mills Open Space and contain high quality, ecologically significant riparian habitat that is critical to many wildlife and plant species. Jaffe Park is also where the Rio Grande and Aspen Mass Trails connect and is used as a trailhead.

### 3.3.2 Adjacent Land Use

In addition to the public owned properties listed above there are other public and private holdings adjacent to the park. The Roaring Fork River, McLain Flats Road, and the Rio Grande Railroad, which contains the Rio Grande Trail, border the park. On the west side of the river there is the Aspen Mass property, CDOT and a private residence.

South of the park and on the east side of McLain Flats Road, Lowe W/J, LLC has many parcels and is in the process of developing them. The Lowe W/J, LLC application which is

pending as of the date of this Plan proposes to donate the adjacent property to Pitkin County, which would increase the size and quality of Jaffee Park.

### 3.3.3 Twentieth Century Land Use

There is some evidence of an old stage road that traversed the park and continues up stream adjacent the river on adjoining properties. Research into the historic use of this road is continuing. The old road provides the platform for a riverside trail that is still in use.

Elam construction held a sand and gravel excavation permit on the property until June 14, 1981. This permit was extended in 1974.

The property was again significantly disturbed around 1998 when an attempt to install new water lines from the property to adjacent Lowe W/J, LLC land, cutting the hillside below and through the Rio Grand Trail. This work sat unfinished until Lowe W/J, LLC acquired the property. In 2001, Lowe W/J, LLC repaired the trail and the Open Space Department began the arduous process of restoring this repeatedly damaged hillside.

## 4.0 ECOLOGICAL RESOURCES

Vegetation and wildlife surveys have been completed at Airport Ranch Open Space, which is just south of Jaffee Park. These surveys can be used to help determine the vegetation and wildlife that occur at Jaffee Park and have been used to select the native flora for restoration. The only vegetation survey conducted at Jaffee Park has been a noxious weed survey and that is described in 4.1.3.

### 4.1 Vegetation

#### 4.1.1 Upland Vegetation

Past mining for gravel and installing a water line and pump station has severely impacted the vegetation in most of the park. These impacts occurred in the floodplain and along the hillsides. Old pictures of the park have not been found, but relatively undisturbed areas north and south of the park indicate that a xeric tree and shrub community existed on the hillsides. The dominant trees and shrubs in this community are Gambel oak (*Quercus gambelii*), Rocky Mountain juniper (*Juniperus scopulorum*), mountain big sagebrush (*Artemisia tridentata ssp. vaseyana*), snowberry (*Symphoricarpos rotundifolius*), serviceberry (*Amelanchier alnifolia*), and rabbitbrush (*Chrysothamnus spp.*).

After the mining operations ceased the contractor attempted to restore the mined area by regrading the mined slopes, adding topsoil and reseeding with grasses. The problems with the restoration are that (1) not enough topsoil was deposited on the regraded slope (2) the reseeding consisted of native and non-native grass species (3) no native trees, shrubs, or forbs were seeded or planted. Had the original restoration been done correctly, current restoration efforts would have been aided immensely and been much less costly for Pitkin County.

There are very small pockets of native, undisturbed vegetation that we hope will continue to naturally reseed the impacted areas. These areas are being protected from park visitors and noxious weeds.

#### 4.1.2 Riparian Vegetation

The riparian area at Jaffee Park is the main attraction to visitors and is the least impacted by the former uses of the park. Since riparian areas are so important to maintaining water quality, stream banks, and fish and wildlife habitat, it is imperative that Pitkin County manage the riparian area at Jaffee Park to limit visitor impacts.

The riparian plant association that occurs at Jaffee Park is composed of a montane forest that is dominated by narrowleaf cottonwood (*Populus angustifolia*). Engelmann spruce (*Picea engelmannii*), blue spruce (*Picea pungens*), and Douglas fir (*Pseudotsuga menziesii*) also occurs at Jaffee Park with thin leaf alder (*Alnus incana ssp. tenuifolia*), red-osier dogwood (*Cornus sericea*), and other shrub species composing the understory. The Colorado Natural Heritage Program ranks the occurrence of *Populus angustifolia*-*Picea pungens*/*Alnus incana* as G3/S3. This ranking means that the occurrence of narrowleaf cottonwood with blue spruce and an understory of thin leaf alder is globally vulnerable and should be a management priority. At Jaffee Park the condition of this occurrence is in good condition and is a management priority to limit human impacts so the condition of the forest can be enhanced.

At the entrance of the park exist two artificial ponds that support wetland vegetation. These ponds hold water during the spring runoff and when the areas above the park are being irrigated. The ponds will be managed to support a diverse population of native wetland plant species.

#### 4.1.3 Noxious Weeds

Due to the former gravel pit operations, waterline cut, and electric utility cut, noxious weeds have invaded Jaffee Park. The weeds that are prominent at Jaffee Park and their status are:

- **Leafy Spurge** (*Euphorbia esula*) – The Woody Creek area is heavily infested with leafy spurge and Jaffee Park is no exception. The “Evil Spurge”, the nickname we have given to this enormously invasive and hard to control weed, is the most prevalent noxious weed in the park and occurs in disturbed and undisturbed areas. It is very difficult to control due to the fact that it reproduces from seed and root bud. An integrated pest management approach has been initiated. All occurrences in the park have been mapped in 2002 and control efforts were begun in 2001 with herbicide. Tordon has been applied in 2001 with some success. In 2002, flea beetles acquired from the Colorado Department of Agriculture were released. See Appendix C for a map locating all leafy spurge infestations and flea beetle release points. No herbicides were sprayed on leafy spurge in 2002 due to the release of the flea beetles and the problems with timing the flowering and the effectiveness of herbicide due to the severe drought. In 2003, the effectiveness of the flea beetles will be evaluated to determine if more releases are needed and if herbicides will be used. Also in 2003, native grasses and forbs will be seeded in infested areas to provide competition with leafy spurge. Since Jaffee Park is such a high visitor use area and the infestation of

leafy spurge is so widespread, the use of restricted use herbicides like Tordon will be limited until it is determined that the flea beetles, native plant competition, and less soil active herbicides are not effective in controlling the evil spurge.

- **Plumeless Thistle** (*Carduus acanthoides*) – This invasive weed can be found in most of the disturbed areas at Jaffee Park, but is absent from the undisturbed areas. Herbicides have been used to manage plumeless thistle with varying success. It is essential to revegetate the disturbed areas to provide competition to the thistles. The management strategy for the next 2 years will be to revegetate with native plants, spot spray with non-restricted use pesticides and mechanically control plumeless then evaluate our success. Biological controls for plumeless thistle have seen mixed results and none have been used at Jaffee Park. When better results for biological controls are achieved their use at Jaffee Park will be considered.
- **Yellow Toadflax** (*Linaria vulgaris*) – Only a few plants have been found near the connecting trail to the Rio Grande Trail and have been mechanically removed by digging up as much of the plant as possible. Since this weed is so invasive and hard to control it is a priority to check the whole park every year and mechanically remove all plants.
- **Russian Thistle** (*Salsola australis*) – Commonly called tumbleweed, Russian thistle has been found in Jaffee Park along the connecting trail to the Rio Grande trail in 2002. All plants were pulled and removed from the park. Russian thistle is common around the park and Open Space and Trails removed all plants from the Rio Grande corridor by pulling and then removing them from the area. Management for this species will incorporate applying preemergent herbicides to the connecting trail during the spring and monitoring for new infestations during summer.
- **Houndstongue** (*Cynoglossum officinale*), **Scentless Chamomile** (*Matricaria perforata*), **Common Mullein** (*Verbascum thapsus*) – Small infestations of these weeds occurs in the disturbed areas of the park and will be managed in the same way as plumeless thistle.

## 4.2 Wildlife

Jaffee Park contains significant riparian and aquatic habitat as well as high quality upland habitats such as mixed mountain shrubland and mountain sage-snowberry shrubland. In addition, the protection of hundreds of acres of outstanding aquatic, riparian, and upland wildlife habitat immediately upstream (Mills Open Space/Airport Ranch Open Space/Red Butte Ranch Open Space/Stein Park Complex) has greatly enhanced the conservation value of Jaffee Park. The interspersed high quality narrowleaf cottonwood -Engelmann spruce- Douglas fir riparian habitat and its adjoining riparian and slope wetlands, Gambel oak dominated mixed mountain shrubland, and mountain sage-rabbitbrush-snowberry shrublands of this open space complex provides some of the most important and diverse wildlife habitat in central Pitkin County.

Mule deer, coyotes, red fox, mink, red tailed hawks, black bears, and great-horned owls are

some of the more charismatic wildlife species that incorporate Jaffee Park as part of their home range. Bald eagles are often seen at Jaffee Park in the winter using the large narrowleaf cottonwoods as diurnal hunting perches. Both long- and short-tailed weasels occur in and around Jaffee Park, as do American martens. Pine squirrels, least chipmunks, Wyoming ground squirrels, montane voles, and deer mice are the most common prey species.

Both the riparian and mountain shrub habitats support breeding Neotropical migratory and resident songbirds. These include green-tailed and spotted towhees, orange-crowned warblers, dusky flycatchers, and chipping sparrows in the upland shrubs, yellow and yellow-rumped warblers, black-capped and mountain chickadees, brown creepers, song and fox sparrows, and cordilleran flycatchers in the riparian habitat. Common mergansers, American dipper, mallards, and other species of ducks are often seen in the river at Jaffee Park. Northern pygmy owls, saw-whet owls, Cooper's hawks, and American kestrels have all been identified on and around the property.

There are no Federal Endangered species that occur at Jaffee Park and the only Threatened species that occurs on the property are bald eagles (both State and Federal). River otters (State Endangered) occur at lower elevations on the Roaring Fork River and will likely make their way up to the Park in the future. State Species of Concern that historically occurred at and around Jaffee Park but may or may not occur there at the present include: Colorado River cutthroat trout and northern leopard frogs.

Jaffee Park is probably the most heavily used Open Space property and, as described above, serves as a portal to the greater Roaring Fork River Gorge Open Space complex. Consequently, Jaffee Park provides a fantastic opportunity for nature interpretation and education in a place where heavy use can be managed.

## **5.0 VISITOR SERVICES**

### **5.1 Recreation Potential**

The property was gifted to the County to be used as a public park for passive recreation. Because Jaffee Park provides a large parking area along the Roaring Fork River and a trail connection to the Rio Grande, it has become one of the corridor's main "park and recreate" centers. An agreement between the Grantor and the County prohibits use of the Park for "camping, assemblies, county fairs and the like, as well as permanent or temporary structures of any kind". The agreement allows for short term parking, except for commercial buses. In addition to many amenities that have been developed for the Park, the original plan called for an amphitheatre.

#### **5.1.1 Significant Resources**

Jaffee Park is one of the upper Roaring Fork River's primary locations for rafting and kayaking put-ins and take-outs. It receives high use from both individual boaters and commercial operations. Annual counts from commercial rafters range from 4,500 to 5,000 user days for the upper Roaring Fork from 1998 to 2000 (source: Colorado River Outfitters Association [www.croa.org](http://www.croa.org)). Monitoring of the level of use from both sources will provide

information as to the impacts that these uses have on the property and how to manage those impacts. A permit system has been instituted for the commercial use of the area and will help to track and control its use (Appendix E).

The park is also a popular fishing access point and the impacts are becoming apparent along the river. People have created river access trails that are eroding and sending sediment into the river. All river access trails will be mapped and then it will be determined which trails will be improved and which ones will be closed. Providing sustainable river access trails is a core function of the recreation use of the park, however, these trails need to avoid impacting the riparian vegetation and river.

### 5.1.2 Trail System Considerations

The park contains a connector trail leading up a slope to the Rio Grande Trail. This trail is heavily used by hikers, mountain bikers, and equestrians and has been included in annual town series bike races for several years.

There is also a “social” trail that exists on the property, which follows the river upstream and connects to the Rio Grande Trail further east. The trail follows what appears to be an historic stage road. This trail has spawned many unauthorized river access trails that need to be mapped and then either improved or closed. Use of this trail will be monitored to determine whether limitations on its use may be necessary to manage impacts to the vegetation and wildlife upstream of the park.

The new Aspen Mass trail connects to the park via the old Smith Road Bridge. Discussions with the Public Works Department are underway to transfer the Smith Bridge to the Open Space Department and restore and maintain it as a pedestrian crossing. Once entering the park from the Aspen Mass Trail, users will be able to use a primitive trail along the river to connect with the trail that leads up to the Rio Grande Trail.

### 5.1.3 Other Recreation Resources

In addition to the trail and river access, the park provides a picnic area and temporary restroom services. A volunteer project in 2002 cleaned up the river access from the picnic area and built connecting trails while restoring the slope adjacent the river.

Certain restrictions for the park outlined by the agreement between Jaffee and the County are discussed above. The use of parking has expanded from what was originally proposed for the park (short term, non-commercial parking for up to 15 vehicles). However, the popularity of Jaffee Park and growth in recreational uses and activities in Pitkin County has created a demand that supercedes the limits of the 1979 agreement. Monitoring and regulating the use of the parking lot will allow staff to determine what level meets the needs of the public and what level compromises the park’s amenities.

## 5.2 Education Potential

Jaffee Park can provide an ideal location for interpretation of the Roaring Fork River and how the park is being restored from a gravel pit. The park has the potential to become a

focal point for riparian education and fly fishing and kayaking lessons. Open Space and Trails staff will need to determine what educational activities are necessary and can be accommodated without creating any serious impacts.

### **5.3 Dogs**

Jaffee Park is a very popular place for people to walk their dogs and dog feces is becoming a problem. Open Space and Trails will install a “Dog Waste Station” and use the Open Space and Trails Ranger to enforce compliance with the leash law and educate people about the impacts that dogs have on open space and trails.

### **5.4 Fencing**

Only fencing necessary to limit human impacts will be installed at Jaffee Park. All fencing installed will be wildlife friendly and not exceed 42 inches in height and only be 2 rails or wires that are at least 16 inches off the ground. Currently, there is a fence at the entrance that directs cars to the parking lot and one that blocks cars from driving on the picnic area.

### **5.5 Visitor Amenities**

There are two picnic benches and tables located on the turf section of the park. A temporary toilet is provided from May 1<sup>st</sup> through October 31<sup>st</sup> and in the future Open Space and Trails will determine if a permanent restroom facility is necessary.

#### **5.5.1 Memorials**

Currently, there are two memorial picnic tables, two memorial benches, and a memorial plaque on a boulder in the picnic area. Open Space and Trails has determined that Jaffee Park contains a sufficient amount of memorials and therefore no more memorials will be placed at Jaffee Park. The current memorials will be managed by Open Space and Trails to extend the useable life of the picnic tables and benches. Once the useable life of these memorials has expired, the families will be contacted to determine if they want to purchase a new memorial and contribute a \$100 endowment for the maintenance of that memorial. All replaced memorials will adhere to the Open Space and Trails Memorial Policy as adopted and amended.

## **6.0 SPECIFIC MANAGEMENT ACTIONS**

- **Restore the uplands east and south of Jaffee Park Road and the connecting trail to the Rio Grande Trail with native plantings and seedings. This will continue the restoration projects completed in 2001 and 2002. This is a long-term project that will be evaluated each year. See Appendix B for locations of projects completed in 2001 and 2002.**
- **Eliminate all noxious weeds! This is a management priority that will be accomplished through an integrated pest management approach that includes herbicides, biological controls, mechanical removal, and planting native species. See Appendix C for a map of Leafy Spurge and management actions at Jaffee Park.**
- **Monitor commercial and non-commercial use to evaluate impacts on vegetation, wildlife, and river quality. The commercial use permit system will be used to monitor commercial use along with the Open Space and Trails Ranger who will be monitoring all visitor use throughout the summer months.**
- **Continue to evaluate the condition of the riparian area and determine what management actions are needed to improve, restore, and/or maintain this resource.**
- **Map all river access trails at Jaffee Park and determine which trails will be stabilized and which trails will be closed and then restored. See Appendix A for current trails and trail conditions.**
- **Connect the Aspen Mass Trail to the Rio Grande Trail through Jaffee Park.**
- **Install a dog waste station and garbage can.**

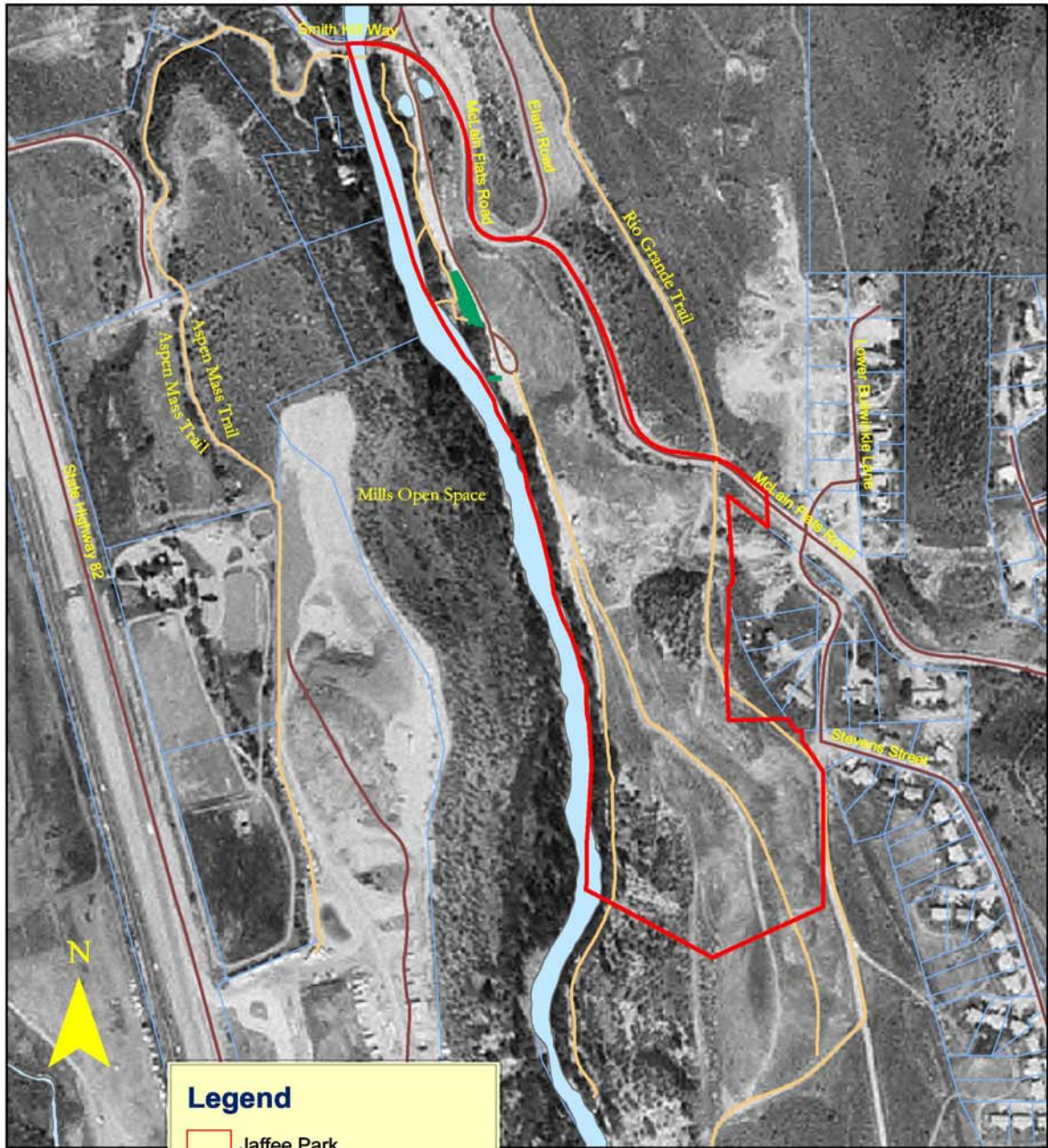
## **7.0 REGULATIONS**

The regulations governing the management, maintenance, and utilization of Pitkin County Open Space and Trails properties are set forth in Title XII of The Pitkin County Code (Ord. 01-004).

In addition to the regulations contained in Title XII the following regulations are specific to Jaffee Park and only apply therein:

1. No Overnight Parking.
2. Commercial raft/kayak put-in at Boat Ramp only.
3. No motorized vehicles allowed on Boat Ramp, except for trailers loading and unloading.

# Jaffee Park

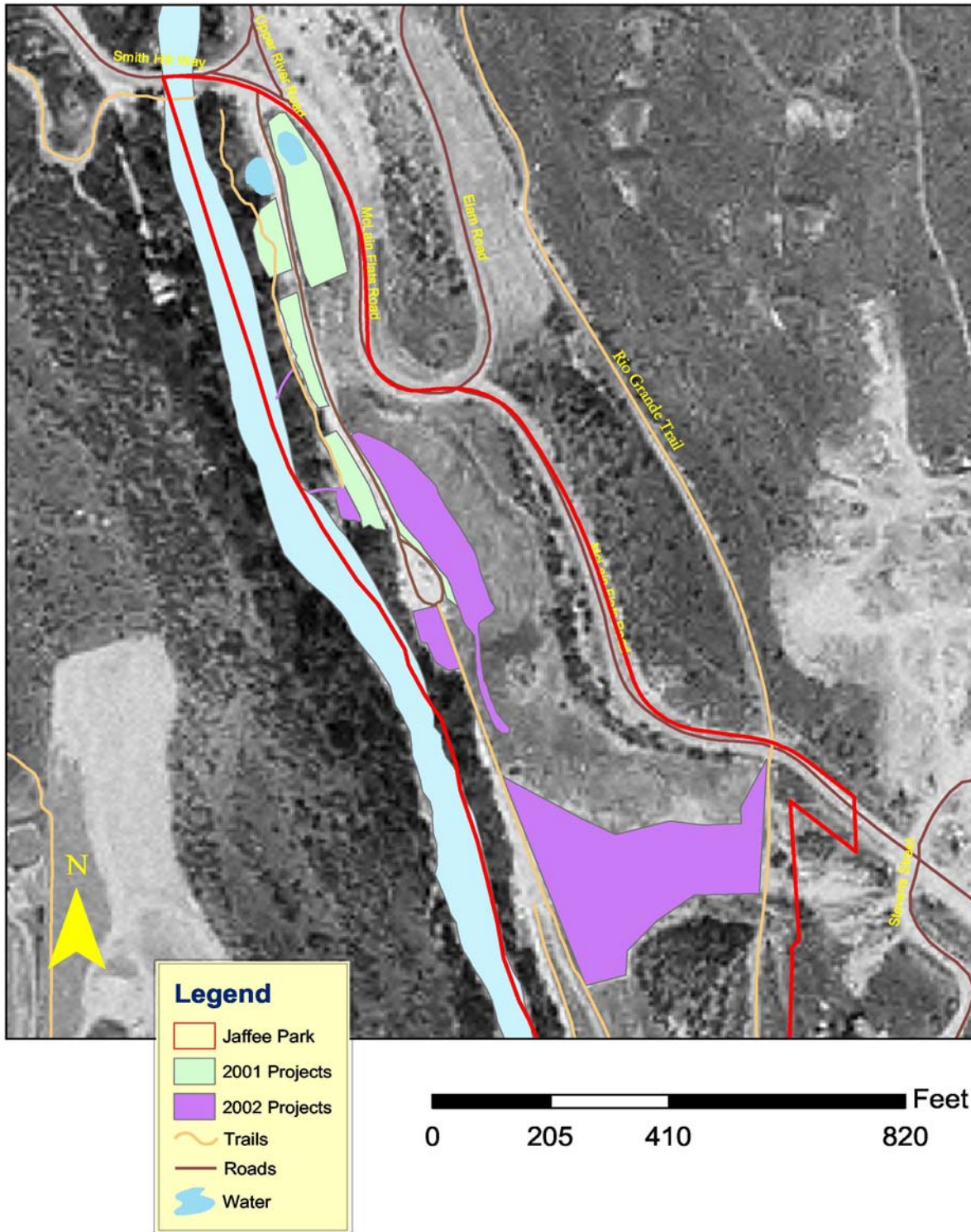


**Legend**

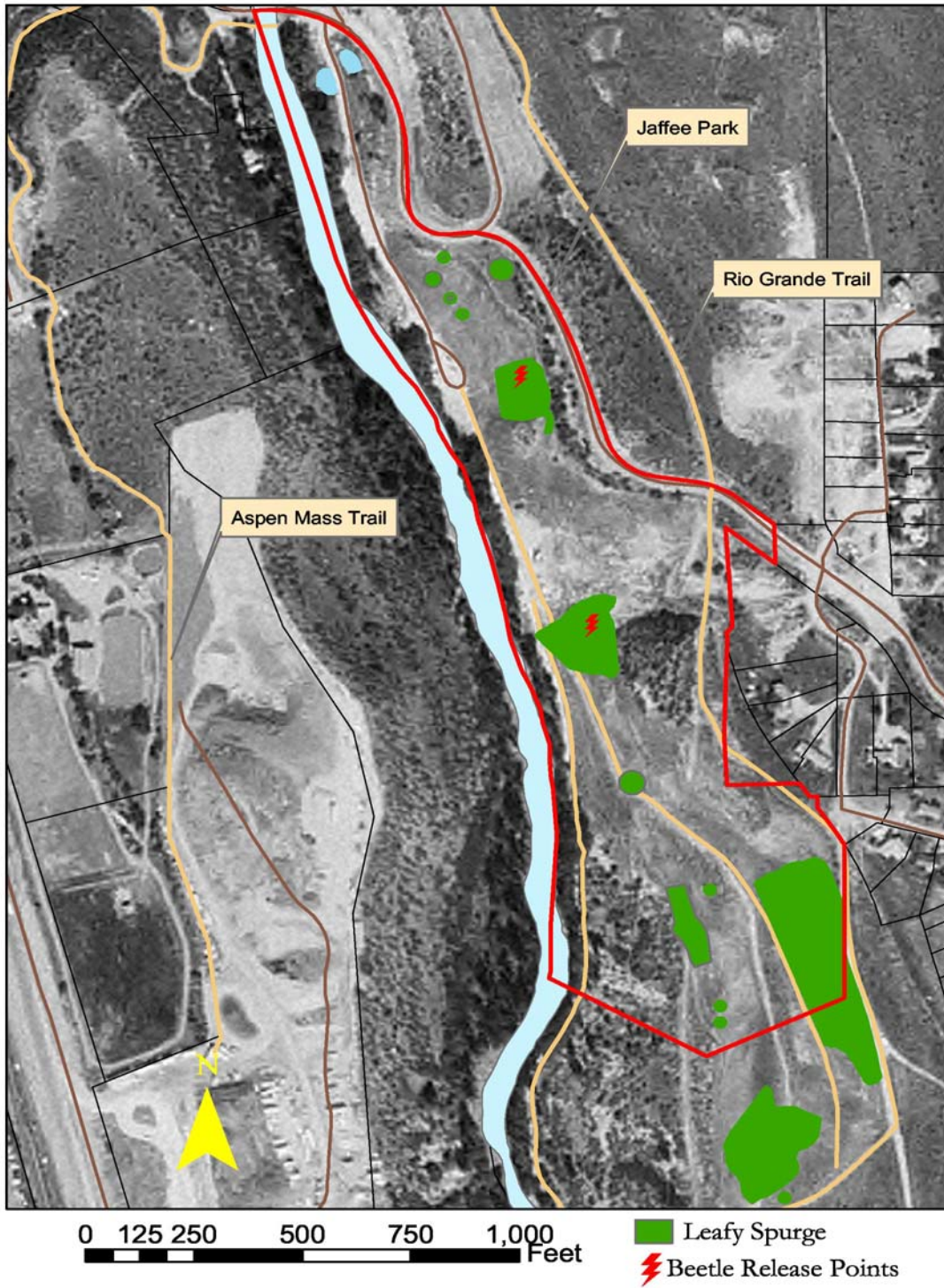
- Jaffee Park
- Trails
- Property Boundary
- Roads
- Picnic Area and Boat Ramp
- Water



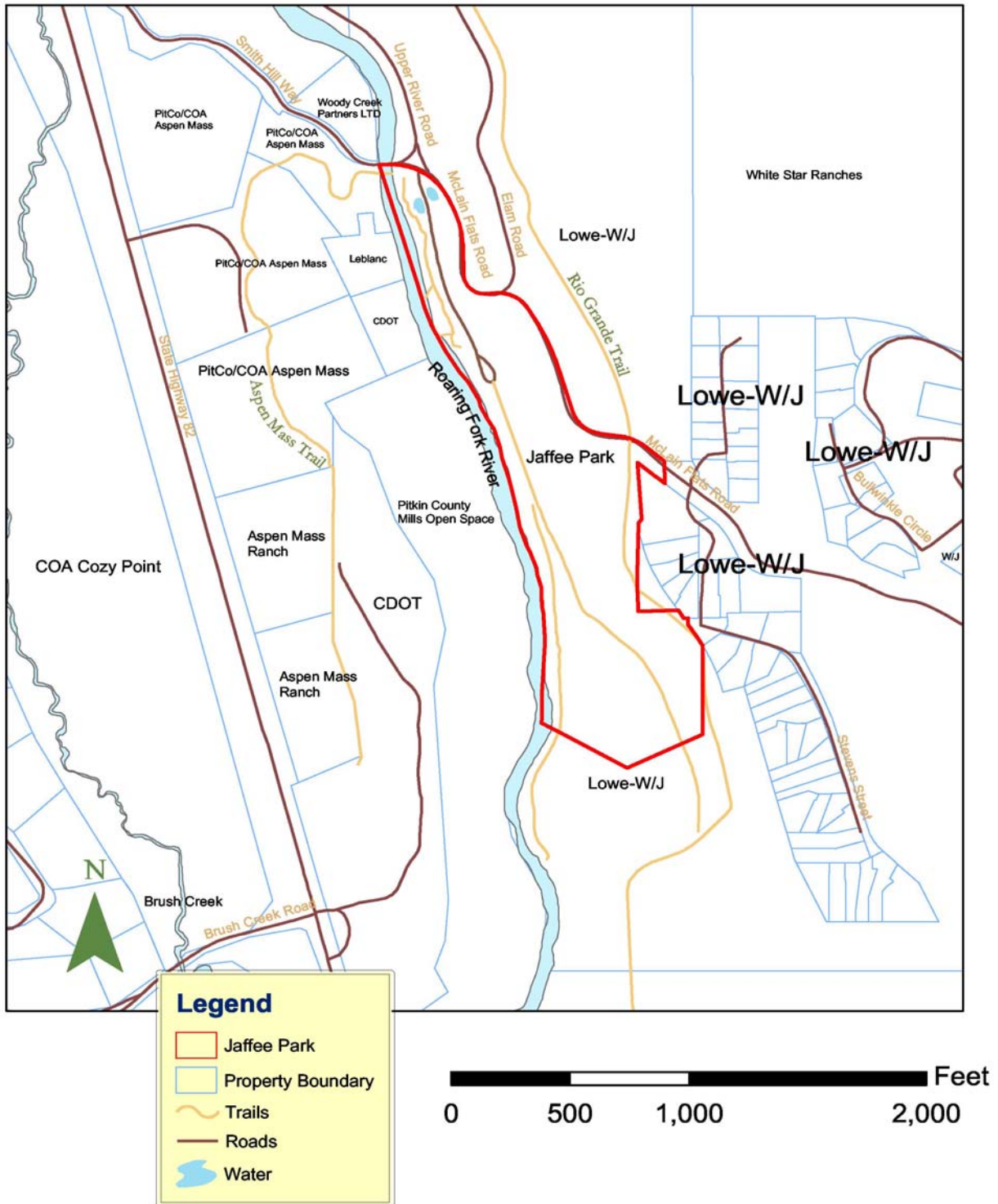
Appendix B **Jaffee Park Revegetation and Trail Projects**



# Leafy Spurge and Flea Beetle Release Points



# Adjacent Land Owners



## Appendix E

### Permit Requirements of Commercial River Outfitters:

1. Parking is prohibited for all commercial outfitting vehicles. Vehicles used for commercial purposes may load and unload guests and equipment, according to the following guidelines:
  - No permittee will proceed to the Jaffee Park boat ramp until such time as it is clearly evident that space is available for them to load/unload safely. The ramp area will be kept clear at all times for loading and unloading activities.
  - The ramp area is to be used for loading and unloading only. Loading/unloading time shall not exceed 30 minutes.
  - No vehicles will be left unattended at anytime. Attended vehicles will not be left in the ramp area or adjoining loop for over 30 minutes, space allowing.
  - No storage parking of vehicles is allowed anywhere in the park. Commercial vehicles left unattended anywhere in the park are subject to ticketing and towing.
2. Commercial users are not permitted to leave any equipment at Jaffee Park.
3. Commercial users must not leave any trash behind. Please note that Jaffee Park experiences a high level of activity from bears. Therefore, it is imperative that all food not be left behind in the Park.
4. Commercial permit holders are required to keep a detailed log of daily commercial activities at Jaffee Park, including: date and time, use (put-in or take-out), type of trip (i.e., half day float) number of boats, number of guests, number of staff. Signed reports must be submitted to the Open Space and Trails administrative office (Open Space and Trails, 530 East Main Street, Aspen, Colorado 81611) by August 30<sup>th</sup> of each year. Reports must be accompanied with a user fee equal to \$1.00 per guest taken by permittee during the permitted year, for the total number of guests. You may use the same reporting form as you use for the BLM provided that you include all of the information requested above, or you can use the attached form.
5. Permittees are required to post a \$500 security bond, which will be used only if a permittee's activities are identified as having impacts to the park, which require restoration or clean-up from Open Space and Trails staff.
6. All permittees shall abide by the rules and regulations for use of the boat ramp and Jaffee Park which may be established from time to time by the Open Space and Trails Board and/or the Board of County Commissioners. All permittees are responsible for educating their employees about these rules and regulations. Violation of these regulations may result in revocation of commercial permits and will be taken into account for future applications for certification to use Jaffee Park.

Failure to comply with the above requirements may result in the revocation of this authorization. Any violation of the regulations contained within this permit or Title XII of the Pitkin County Code may result in fines as outlined in Pitkin County BOCC Ordinance #2001-020.

**Jaffee Park Restoration 2000**



Jaffee Park Restoration Projects 2002



New Boat Ramp



Reseeding the Area South of the Boat Ramp



Hydroseeded the Waterline Cut



Reseeded the Area South of the Boat Ramp

Jaffee Park Restoration Projects 2002



Before



After

2002 Reference Photos



2002 Reference Photos

